

SEACHROME

TABLE OF CONTENTS

Grab Bars

2-5



Please call to order: 800-643-5906 or 800-643-9860

Accessible Environments, Inc.

www.acesinc.com

GRAB BARS

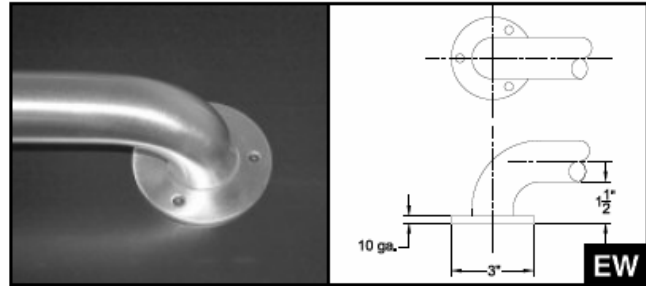
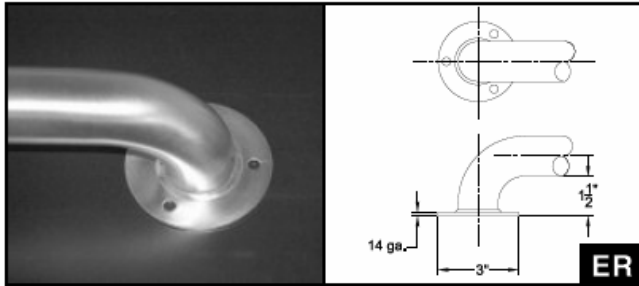
MADE IN U.S.A.



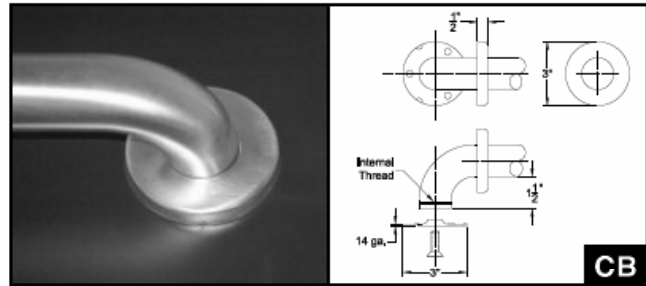
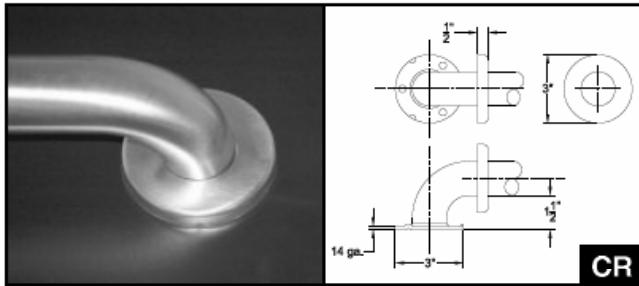
ALL "ER," "EW" & "CR" FLANGE, STAINLESS BARS MEET FEDERAL SPECIFICATION WW-P-541/8b, AMENDMENT 1, 16 APRIL 1990; ANSI 117.1, AND ALL A.D.A. (Americans with Disabilities Act) CODE REQUIREMENTS. THESE BARS, WHEN PROPERLY INSTALLED, MEET THE DOWNWARD PULL REQUIREMENT FOR FEDERAL SPECIFICATION WORK, F.H.A., V.A. HOSPITAL CODES AND PRIVATE CONSTRUCTION



EXPOSED SCREW FLANGES



CONCEALED SCREW FLANGES



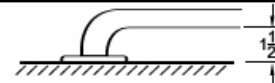
FINISH SERIES

- "GS" Satin #304 Stainless Steel
- "GX" Polished #304 Stainless Steel
- "GY" Peened w/satin ends #304 Stainless Steel
- "GZ" Peened w/polished ends #304 Stainless Steel
- "GB" Polished #260 Solid Brass
- "GP" Powder Coated #304 Stainless Steel

BAR DIAMETERS

- "H" 1-1/2" dia. x .049" (18 ga)
- "Q" 1-1/4" dia. x .049" (18 ga)

STANDARD WALL CLEARANCE



TO ORDER – SPECIFY

Example	Series	Dimension	Flange
GST-240360-HCR2 =	GS + T	240360+	H + CR2
	Configuration		Bar Dia

DECORATIVE CONCEALED FLANGE COVERS

Add \$5.00 List per flange



ROPE "2"



RIDGE "3"



STEP "4"

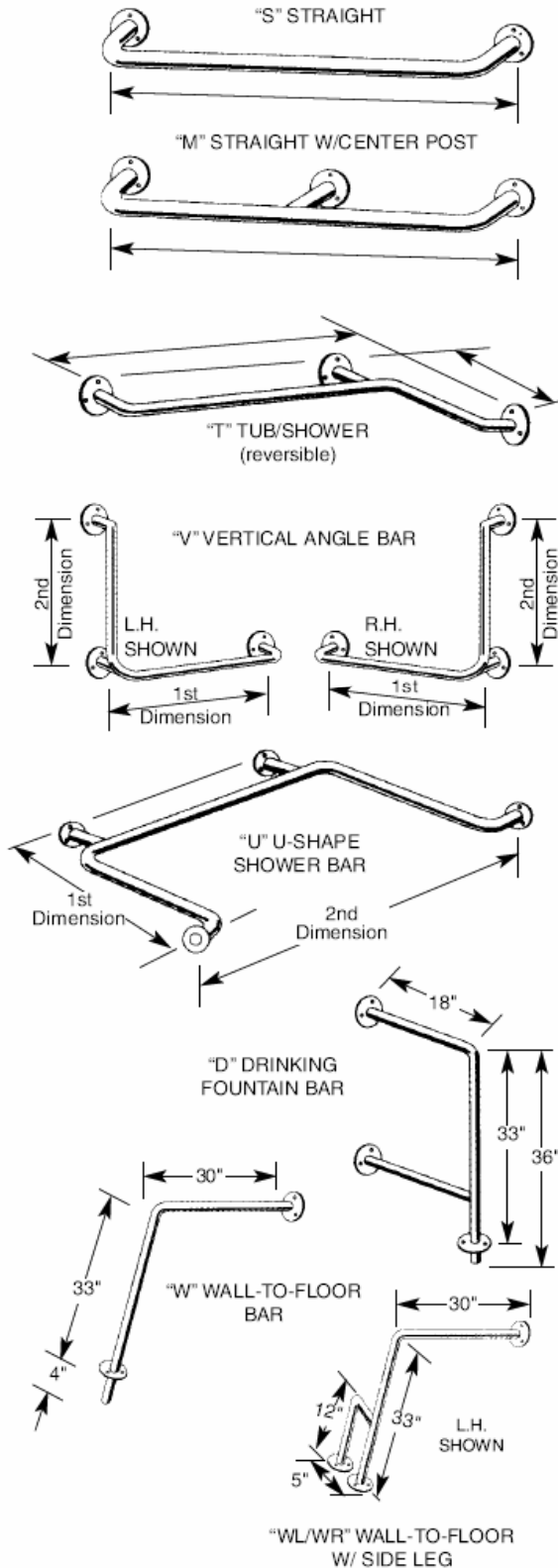


BAND "5"

**SEACHROME SPECIALIZES IN CUSTOM SIZES AND CONFIGURATIONS
CALL FOR TECHNICAL ASSISTANCE & COMPETITIVE PRICE QUOTES**

SATIN STAINLESS – “GS” SERIES

STANDARD CONFIGURATIONS



"S" STRAIGHT BARS

Item #	Length	QER	HER	QEW	HEW	QCR	HCR
GSS-120	12"	21.95	25.85	25.75	28.15	25.70	28.15
GSS-160	16"	23.90	26.70	27.10	28.60	27.10	28.60
GSS-180	18"	24.80	28.60	28.10	29.75	28.10	29.75
GSS-240	24"	27.05	31.70	30.30	33.65	30.30	33.65
GSS-300	30"	29.60	33.50	32.95	35.50	32.95	35.50
GSS-320	32"	31.35	35.80	34.85	37.65	34.85	37.65
GSS-360	36"	32.80	37.40	36.00	39.65	36.00	39.65
GSS-420	42"	35.00	40.35	38.90	41.55	38.90	41.55
GSS-480	48"	37.10	42.95	40.60	44.75	40.60	44.75

"M" STRAIGHT BARS WITH CENTER POST

Item #	Length	QER	HER	QEW	HEW	QCR	HCR
GSM-360	36"	68.15	73.85	72.40	79.10	72.40	79.10
GSM-420	42"	72.15	78.00	84.40	87.80	84.40	87.80
GSM-480	48"	73.30	83.10	87.65	95.10	87.65	95.10
GSM-520	52"	77.55	86.55	90.85	99.55	90.85	99.55
GSM-540	54"	78.95	88.55	93.25	101.25	93.25	101.25
GSM-600	60"	85.30	95.40	97.00	106.55	97.00	106.55

"T" TUB & SHOWER BARS (Reversible)

Item #	Length	QER	HER	QEW	HEW	QCR	HCR
GST-160160	16"x16"	81.85	91.00	85.35	100.70	85.35	100.70
GST-160320	16"x32"	85.20	95.55	88.70	103.75	88.70	103.75
GST-240240	24"x24"	85.20	94.55	88.70	103.75	88.70	103.75
GST-200400	20"x40"	91.70	104.90	99.40	117.75	99.40	117.75
GST-240360	24"x36"	91.70	104.90	99.40	117.75	99.40	117.75
GST-240480	24"x48"	98.55	115.20	108.90	127.15	108.90	127.15
GST-300300	30"x30"	91.70	104.90	99.40	117.75	99.40	117.75
GST-360360	36"x36"	98.55	115.20	109.90	127.15	109.90	127.15
GST-360480	36"x48"	106.95	121.90	119.90	135.45	119.90	135.45
GST-360540	36"x54"	117.85	126.15	124.85	139.65	124.85	139.65

"V" VERTICAL ANGLE BARS (Designate RH or LH)

Item #	Length	QER	HER	QEW	HEW	QCR	HCR
GSV-160160	16"x16"	81.85	91.00	85.35	100.70	85.35	100.70
GSV-200200	20"x20"	83.55	86.15	87.00	102.35	87.00	102.35
GSV-240240	24"x24"	85.20	94.55	88.70	103.75	88.70	103.75
GSV-300300	30"x30"	91.70	104.90	99.40	117.75	99.40	117.75
GSV-160320	16"x32"	85.20	94.55	88.70	103.75	88.70	103.75

"U" U-SHAPED SHOWER BARS

Item #	Length	QER	HER	QEW	HEW	QCR	HCR
GSU-300360	30"x36"x30"	196.80	207.90	207.90	219.00	207.90	219.00
GSU-300480	30"x48"x30"	207.90	219.00	219.00	228.70	219.00	228.70
GSU-300540	30"x54"x30"	219.00	228.70	228.70	239.80	228.70	239.80
GSU-300600	30"x60"x30"	232.85	242.55	242.55	253.65	242.55	253.65

"D" DRINKING FOUNTAIN BAR

Item #	Length	QER	HER	QEW	HEW	QCR	HCR
GSD-330180	33"x18"	115.90	123.10	119.25	127.65	119.25	127.65

"W" WALL-TO-FLOOR BAR

Item #	Length	QER	HER	QEW	HEW	QCR	HCR
GSW-330300	33"x30"	81.85	98.40	94.25	110.90	94.25	110.90

"WR" (RH) or "WL" (LH) WALL-TO-FLOOR BARS w/ side leg

Item #	Length	QER	HER	QEW	HEW	QCR	HCR
GSWR-330300	33"x30"	141.15	157.80	153.65	170.30	153.65	170.30
GSWL-330300	33"x30"	141.15	157.80	153.65	170.30	153.65	170.30

SPECIALTY STAINLESS BARS

POLISHED STAINLESS "GX" SERIES

"Q" 1-1/4" TUBE DIA.

Item #	Size	List
"S" STRAIGHT		
GXS-120-QCR	12"	34.40
GXS-160-QCR	16"	37.60
GXS-180-QCR	18"	41.40
GXS-240-QCR	24"	48.25
GXS-300-QCR	30"	55.50
GXS-320-QCR	32"	58.50
GXS-360-QCR	36"	63.55
GXS-420-QCR	42"	70.68
GXS-480-QCR	48"	77.00
"T" TUB & SHOWER		
GXT-160160-QCR	16"x16"	87.75
GXT-160320-QCR	16"x32"	115.25
GXT-240240-QCR	24"x24"	115.25
GXT-200400-QCR	20"x40"	134.00
GXT-240360-QCR	24"x36"	134.00
GXT-240480-QCR	24"x48"	151.70
GXT-300300-QCR	30"x30"	134.00
GXT-360360-QCR	36"x36"	151.70
GXT-360480-QCR	36"x48"	170.70
GXT-360540-QCR	36"x54"	179.70
"V" VERTICAL ANGLE (Designate R or L)		
GXV-160160-QCR	16"x16"	87.75
GXV-200200-QCR	20"x20"	101.20
GXV-240240-QCR	24"x24"	115.25
GXV-300300-QCR	30"x30"	132.45
GXV-160320-QCR	16"x32"	115.25

"H" 1-1/2" TUBE DIA.

Item #	Size	List
"S" STRAIGHT		
GXS-120-HCR	12"	36.80
GXS-160-HCR	16"	40.25
GXS-180-HCR	18"	43.00
GXS-240-HCR	24"	51.50
GXS-300-HCR	30"	58.00
GXS-320-HCR	32"	61.25
GXS-360-HCR	36"	66.70
GXS-420-HCR	42"	73.20
GXS-480-HCR	48"	81.00
"T" TUB & SHOWER		
GXT-160160-HCR	16"x16"	113.00
GXT-160320-HCR	16"x32"	128.10
GXT-240240-HCR	24"x24"	128.10
GXT-200400-HCR	20"x40"	150.10
GXT-240360-HCR	24"x36"	150.10
GXT-240480-HCR	24"x48"	167.60
GXT-300300-HCR	30"x30"	150.10
GXT-360360-HCR	36"x36"	167.60
GXT-360480-HCR	36"x48"	184.35
GXT-360540-HCR	36"x54"	192.70
"V" VERTICAL ANGLE (Designate R or L)		
GXV-160160-HCR	16"x16"	113.00
GXV-200200-HCR	20"x20"	120.80
GXV-240240-HCR	24"x24"	128.10
GXV-300300-HCR	30"x30"	150.10
GXV-160320-HCR	16"x32"	128.10

PEENED w/ SATIN ENDS "GY" SERIES

"Q" 1-1/4" TUBE DIA.

Item #	Size	List
"S" STRAIGHT		
GYS-120-QCR	12"	29.45
GYS-160-QCR	16"	31.80
GYS-180-QCR	18"	33.45
GYS-240-QCR	24"	37.25
GYS-300-QCR	30"	41.55
GYS-320-QCR	32"	44.00
GYS-360-QCR	36"	46.25
GYS-420-QCR	42"	50.95
GYS-480-QCR	48"	54.15
"T" TUB & SHOWER		
GYT-160160-QCR	16"x16"	86.75
GYT-160320-QCR	16"x32"	94.20
GYT-240240-QCR	24"x24"	94.20
GYT-200400-QCR	20"x40"	107.35
GYT-240360-QCR	24"x36"	107.35
GYT-240480-QCR	24"x48"	119.15
GYT-300300-QCR	30"x30"	107.35
GYT-360360-QCR	36"x36"	119.15
GYT-360480-QCR	36"x48"	132.60
GYT-360540-QCR	36"x54"	138.60
"V" VERTICAL ANGLE (Designate R or L)		
GYV-160160-QCR	16"x16"	86.75
GYV-200200-QCR	20"x20"	90.30
GYV-240240-QCR	24"x24"	94.20
GYV-300300-QCR	30"x30"	107.35
GYV-160320-QCR	16"x32"	94.20

"H" 1-1/2" TUBE DIA.

Item #	Size	List
"S" STRAIGHT		
GYS-120-HCR	12"	31.85
GYS-160-HCR	16"	33.30
GYS-180-HCR	18"	35.10
GYS-240-HCR	24"	40.65
GYS-300-HCR	30"	44.10
GYS-320-HCR	32"	46.85
GYS-360-HCR	36"	49.95
GYS-420-HCR	42"	53.55
GYS-480-HCR	48"	58.40
"T" TUB & SHOWER		
GYT-160160-HCR	16"x16"	100.70
GYT-160320-HCR	16"x32"	107.85
GYT-240240-HCR	24"x24"	107.85
GYT-200400-HCR	20"x40"	124.20
GYT-240360-HCR	24"x36"	124.20
GYT-240480-HCR	24"x48"	135.85
GYT-300300-HCR	30"x30"	124.20
GYT-360360-HCR	36"x36"	135.85
GYT-360480-HCR	36"x48"	146.85
GYT-360540-HCR	36"x54"	152.15
"V" VERTICAL ANGLE (Designate R or L)		
GYV-160160-HCR	16"x16"	100.70
GYV-200200-HCR	20"x20"	104.05
GYV-240240-HCR	24"x24"	107.85
GYV-300300-HCR	30"x30"	124.20
GYV-160320-HCR	16"x32"	107.85

PEENED w/ POLISHED ENDS "GZ" SERIES

"Q" 1-1/4" TUBE DIA.

Item #	Size	List
"S" STRAIGHT		
GZS-120-QCR	12"	35.90
GZS-160-QCR	16"	38.45
GZS-180-QCR	18"	40.15
GZS-240-QCR	24"	44.10
GZS-300-QCR	30"	48.50
GZS-320-QCR	32"	51.05
GZS-360-QCR	36"	53.35
GZS-420-QCR	42"	58.20
GZS-480-QCR	48"	61.55
"T" TUB & SHOWER		
GZT-160160-QCR	16"x16"	97.85
GZT-160320-QCR	16"x32"	105.45
GZT-240240-QCR	24"x24"	105.45
GZT-200400-QCR	20"x40"	118.90
GZT-240360-QCR	24"x36"	118.90
GZT-240480-QCR	24"x48"	132.00
GZT-300300-QCR	30"x30"	118.90
GZT-360360-QCR	36"x36"	132.00
GZT-360480-QCR	36"x48"	145.00
GZT-360540-QCR	36"x54"	151.25
"V" VERTICAL ANGLE (Designate R or L)		
GZV-160160-QCR	16"x16"	97.85
GZV-200200-QCR	20"x20"	100.80
GZV-240240-QCR	24"x24"	105.45
GZV-300300-QCR	30"x30"	118.90
GZV-160320-QCR	16"x32"	105.45

"H" 1-1/2" TUBE DIA.

Item #	Size	List
"S" STRAIGHT		
GZS-120-HCR	12"	38.50
GZS-160-HCR	16"	40.00
GZS-180-HCR	18"	41.85
GZS-240-HCR	24"	47.55
GZS-300-HCR	30"	51.15
GZS-320-HCR	32"	54.00
GZS-360-HCR	36"	57.20
GZS-420-HCR	42"	60.90
GZS-480-HCR	48"	65.90
"T" TUB & SHOWER		
GZT-160160-HCR	16"x16"	112.35
GZT-160320-HCR	16"x32"	119.70
GZT-240240-HCR	24"x24"	119.70
GZT-200400-HCR	20"x40"	136.25
GZT-240360-HCR	24"x36"	136.25
GZT-240480-HCR	24"x48"	148.50
GZT-300300-HCR	30"x30"	136.25
GZT-360360-HCR	36"x36"	148.50
GZT-360480-HCR	36"x48"	159.85
GZT-360540-HCR	36"x54"	165.25
"V" VERTICAL ANGLE (Designate R or L)		
GZV-160160-HCR	16"x16"	112.35
GZV-200200-HCR	20"x20"	116.05
GZV-240240-HCR	24"x24"	119.70
GZV-300300-HCR	30"x30"	136.25
GZV-160320-HCR	16"x32"	119.70

DECORATIVE BARS

**POLISHED SOLID BRASS
"GB" SERIES**

"Q" 1-1/4" TUBE DIA.

Item #	Size	List
"S" STRAIGHT		
GBS-120-QCB	12"	70.75
GBS-160-QCB	16"	74.10
GBS-180-QCB	18"	76.25
GBS-240-QCB	24"	87.25
GBS-300-QCB	30"	97.60
GBS-320-QCB	32"	100.05
GBS-360-QCB	36"	109.80
GBS-420-QCB	42"	125.05
GBS-480-QCB	48"	151.90
"T" TUB & SHOWER		
GBT-160160-QCB	16"x16"	164.70
GBT-160320-QCB	16"x32"	213.50
GBT-240240-QCB	24"x24"	213.50
GBT-200400-QCB	20"x40"	274.50
GBT-240360-QCB	24"x36"	274.50
GBT-240480-QCB	24"x48"	329.40
GBT-300300-QCB	30"x30"	274.50
GBT-360360-QCB	36"x36"	329.40
GBT-360480-QCB	36"x48"	384.30
GBT-360540-QCB	36"x54"	408.70
"V" VERTICAL ANGLE (Designate R or L)		
GBV-160160-QCB	16"x16"	164.70
GBV-200200-QCB	20"x20"	189.10
GBV-240240-QCB	24"x24"	213.50
GBV-300300-QCB	30"x30"	274.50
GBV-160320-QCB	16"x32"	213.50

"H" 1-1/2" TUBE DIA.

Item #	Size	List
"S" STRAIGHT		
GBS-120-HCB	12"	73.20
GBS-160-HCB	16"	80.20
GBS-180-HCB	18"	82.95
GBS-240-HCB	24"	93.95
GBS-300-HCB	30"	104.00
GBS-320-HCB	32"	106.75
GBS-360-HCB	36"	118.35
GBS-420-HCB	42"	126.25
GBS-480-HCB	48"	147.60
"T" TUB & SHOWER		
GBT-160160-HCB	16"x16"	183.00
GBT-160320-HCB	16"x32"	256.20
GBT-240240-HCB	24"x24"	256.20
GBT-200400-HCB	20"x40"	311.10
GBT-240360-HCB	24"x36"	311.10
GBT-240480-HCB	24"x48"	378.20
GBT-300300-HCB	30"x30"	311.10
GBT-360360-HCB	36"x36"	378.20
GBT-360480-HCB	36"x48"	439.20
GBT-360540-HCB	36"x54"	469.70
"V" VERTICAL ANGLE (Designate R or L)		
GBV-160160-HCB	16"x16"	183.00
GBV-200200-HCB	20"x20"	219.60
GBV-240240-HCB	24"x24"	256.20
GBV-300300-HCB	30"x30"	311.10
GBV-160320-HCB	16"x32"	256.20

**POWDER COATED STAINLESS
"GP" SERIES**

"Q" 1-1/4" TUBE DIA.

Item #	Size	List
"S" STRAIGHT		
GPS-120-QCR	12"	46.80
GPS-160-QCR	16"	50.30
GPS-180-QCR	18"	52.65
GPS-240-QCR	24"	59.65
GPS-300-QCR	30"	66.70
GPS-320-QCR	32"	69.05
GPS-360-QCR	36"	72.55
GPS-420-QCR	42"	78.40
GPS-480-QCR	48"	85.40
"T" TUB & SHOWER		
GPT-160160-QCR	16"x16"	102.40
GPT-160320-QCR	16"x32"	117.60
GPT-240240-QCR	24"x24"	117.60
GPT-200400-QCR	20"x40"	136.90
GPT-240360-QCR	24"x36"	136.90
GPT-240480-QCR	24"x48"	155.20
GPT-300300-QCR	30"x30"	136.90
GPT-360360-QCR	36"x36"	155.20
GPT-360480-QCR	36"x48"	174.20
GPT-360540-QCR	36"x54"	183.20
"V" VERTICAL ANGLE (Designate R or L)		
GPV-160160-QCR	16"x16"	102.40
GPV-200200-QCR	20"x20"	110.00
GPV-240240-QCR	24"x24"	117.60
GPV-300300-QCR	30"x30"	136.90
GPV-160320-QCR	16"x32"	117.60

"H" 1-1/2" TUBE DIA.

Item #	Size	List
"S" STRAIGHT		
GPS-120-HCR	12"	51.50
GPS-160-HCR	16"	56.15
GPS-180-HCR	18"	58.50
GPS-240-HCR	24"	66.70
GPS-300-HCR	30"	73.70
GPS-320-HCR	32"	76.65
GPS-360-HCR	36"	81.90
GPS-420-HCR	42"	87.75
GPS-480-HCR	48"	94.75
"T" TUB & SHOWER		
GPT-160160-HCR	16"x16"	115.85
GPT-160320-HCR	16"x32"	130.80
GPT-240240-HCR	24"x24"	130.80
GPT-200400-HCR	20"x40"	153.05
GPT-240360-HCR	24"x36"	153.05
GPT-240480-HCR	24"x48"	171.25
GPT-300300-HCR	30"x30"	153.05
GPT-360360-HCR	36"x36"	171.25
GPT-360480-HCR	36"x48"	187.85
GPT-360540-HCR	36"x54"	196.20
"V" VERTICAL ANGLE (Designate R or L)		
GPV-160160-HCR	16"x16"	115.85
GPV-200200-HCR	20"x20"	124.00
GPV-240240-HCR	24"x24"	130.80
GPV-300300-HCR	30"x30"	153.05
GPV-160320-HCR	16"x32"	130.80