

Figure 3. Fuse location.

A key switch is located near the UP and DOWN paddles to prevent unauthorized use of the Trus<T>Lift. The key is removable in both positions. The switch may be turned off and the key removed making the unit inoperable. When you wish to use the lift again insert the key, turn the switch on, and remove the key. It is recommended that you have the key readily available whenever operating the lift.

MANUAL CRANK OPERATION

If a power outage occurs while the lift is in use and a passenger is stranded between landings, the carriage can be manually raised or lowered using the Hand Crank Tool provided:

- Unplug the power cord.
- Insert the square end of the Hand Crank Tool through the access hole at the upper right side of the tower (See Figure 2).
- Turn the Hand Crank Tool clockwise to lower the lift and counter-clockwise to raise the lift.

REPLACING FUSES

- Unplug the power cord.
- Open the control box with the key provided (this is the key numbered 644).
- The fuses are located in the control box on the right hand side (See Figure 3).
- Replace the blown fuse with a fuse with the same Amp rating.

For maintenance and trouble shooting information, please refer to the Trus<T>Lift Installation Manual included with the lift or visit our website www.trustram.com

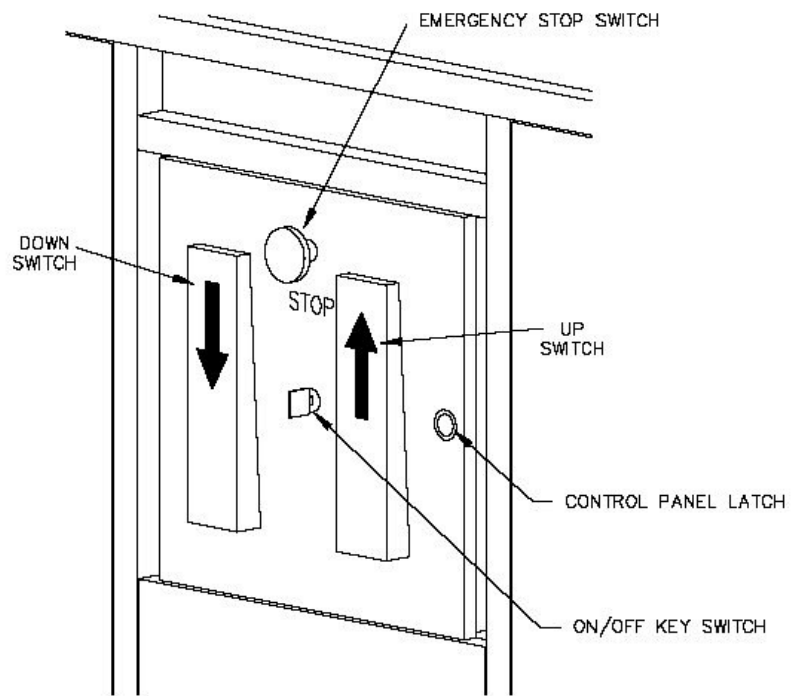


Figure 1. Location of UP, DOWN, and STOP controls.

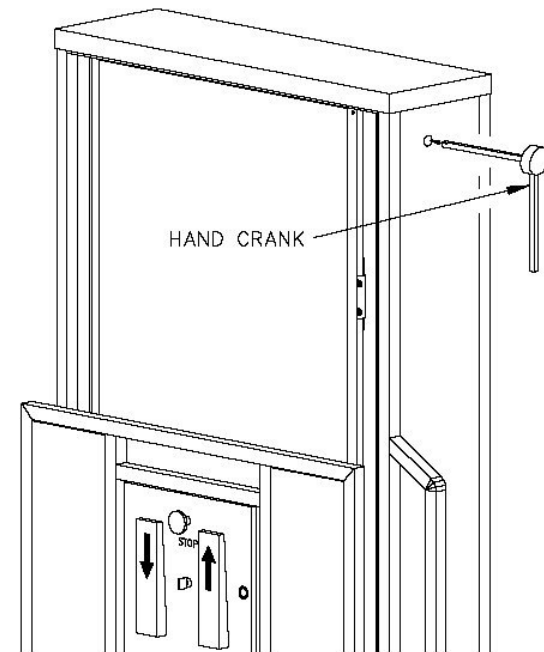
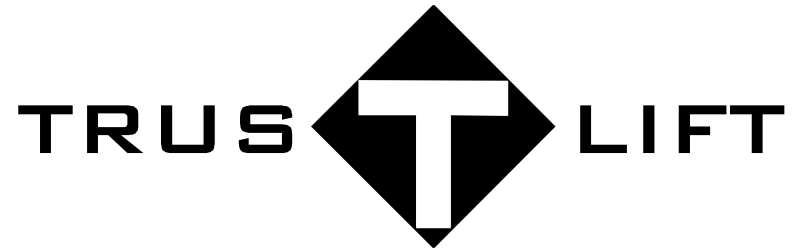


Figure 2. Manual crank.

Trus<T>Lift Dealer

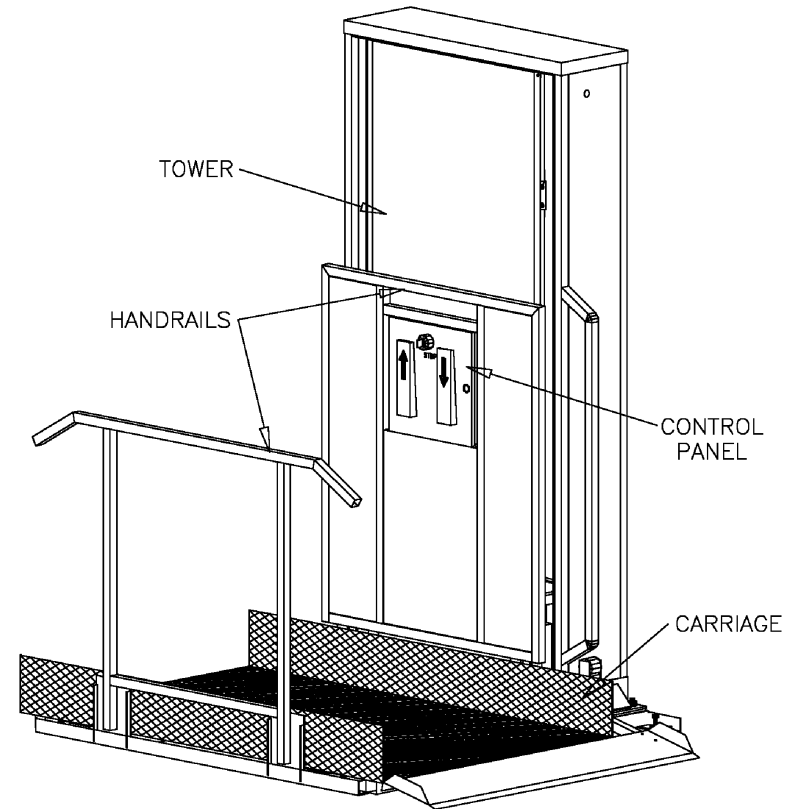


OWNERS MANUAL

Copyright 1996

Manufacturer's Warranty

All parts are warranted against defect for a one year period from date of purchase. This warranty is not intended to cover damage due to misuse or abuse.



OWNERS MANUAL

Copyright 1996

