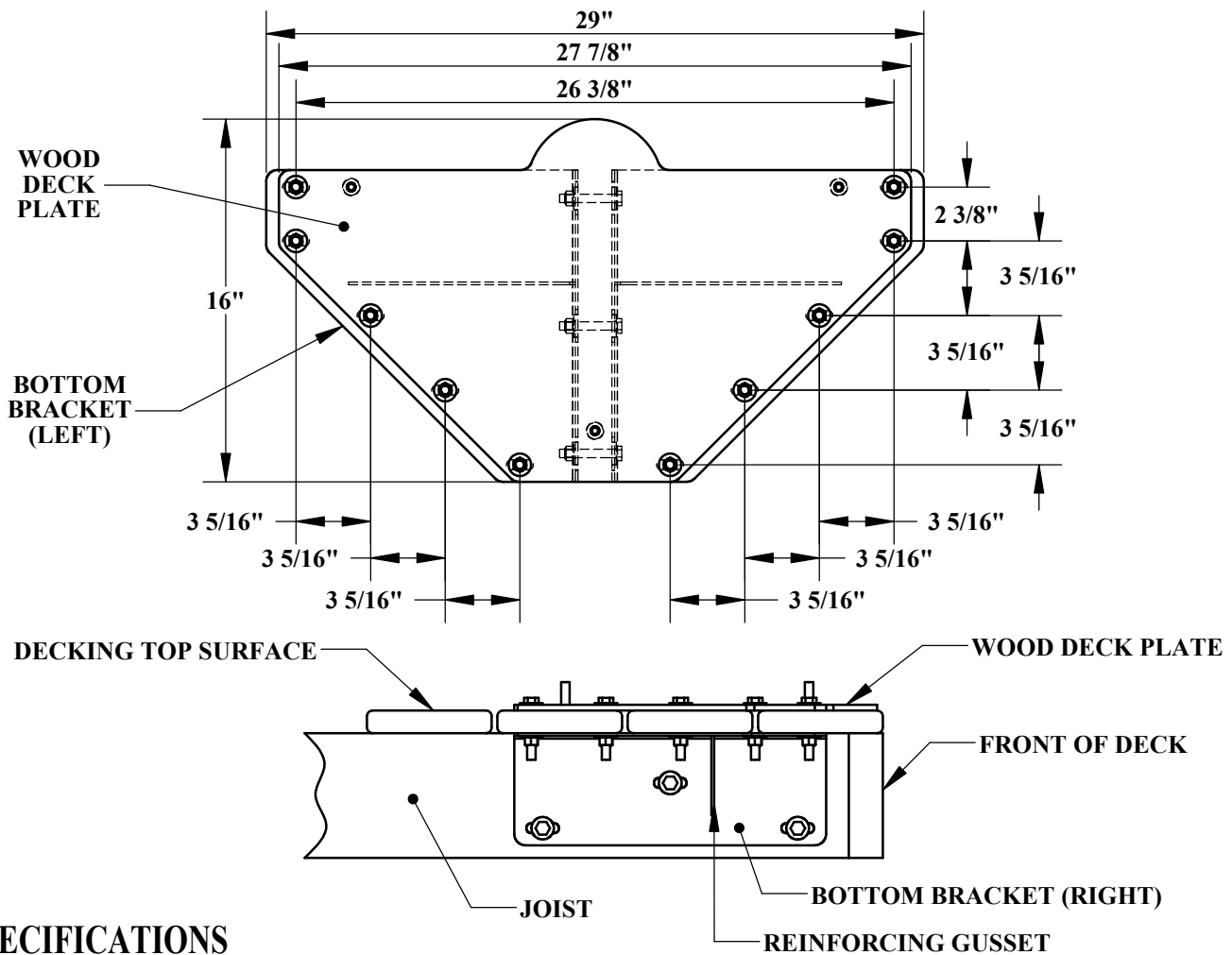


# PRO SPA WOOD DECK PLATE



## SPECIFICATIONS

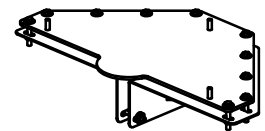
THE AQUA CREEK PRO SPA WOOD DECK PLATE ASSEMBLY SHALL CONSIST OF A 1/4" THICK TYPE 304 STAINLESS STEEL PLATE AND TWO (2) 11-GAUGE BOTTOM BRACKETS . THE DECK PLATE SHALL BE MOUNTED TO THE DECK WITH TEN (10) 3/8" HEX BOLTS. THE DECK SHALL BE CONSTRUCTED OR MODIFIED SUCH A DECK JOIST IS CENTERED UNDER THE WOOD DECK PLATE, AND THE BOTTOM BRACKETS SHALL BE BOLTED THROUGH THE JOIST ON EITHER SIDE WITH THREE (3) 3/8" HEX BOLTS. ALL MOUNTING BOLTS SHALL BE SECURED WITH 3/8" FLAT WASHERS AND 3/8" LOCKING NUTS. THE PRO SPA LIFT SHALL BE MOUNTED DIRECTLY TO THE WOOD DECK PLATE WITH THREE (3) 3/8" FLATHEAD BOLTS, THREE (3) 3/8" FLAT WASHERS AND THREE (3) 3/8" LOCKING NUTS.

THE MANUFACTURER RECOMMENDS THAT THE DECK JOISTS BE A MINIMUM NOMINAL SIZE OF 2" X 6", OR PER LOCAL CODES, WHICHEVER IS LARGER.

WOOD DECK PLATE: 1/4" TYPE 304 STAINLESS STEEL

BOTTOM BRACKETS: 11-GAUGE TYPE 304 STAINLESS STEEL W/REINFORCING GUSSETS

MOUNTING BOLTS:  $\varnothing$ 3/8" FLATHEAD BOLTS - TYPE 304 STAINLESS STEEL



Authorized Dealer:  
 Accessible Environments, Inc.  
 800-643-5906  
[www.acesinc.com](http://www.acesinc.com)

NOTE:  
 \*SPECIFICATIONS ARE SUBJECT TO CHANGE WITHOUT NOTICE  
 \*ALL DIMENSIONS ARE IN INCHES

PRODUCT:		F-106SLWDP	
DWG#:		F-106SLWDP-1	
SCALE:	1:8	DATE:	05/04/06
DRAWN BY:	DS	REVISION:	A