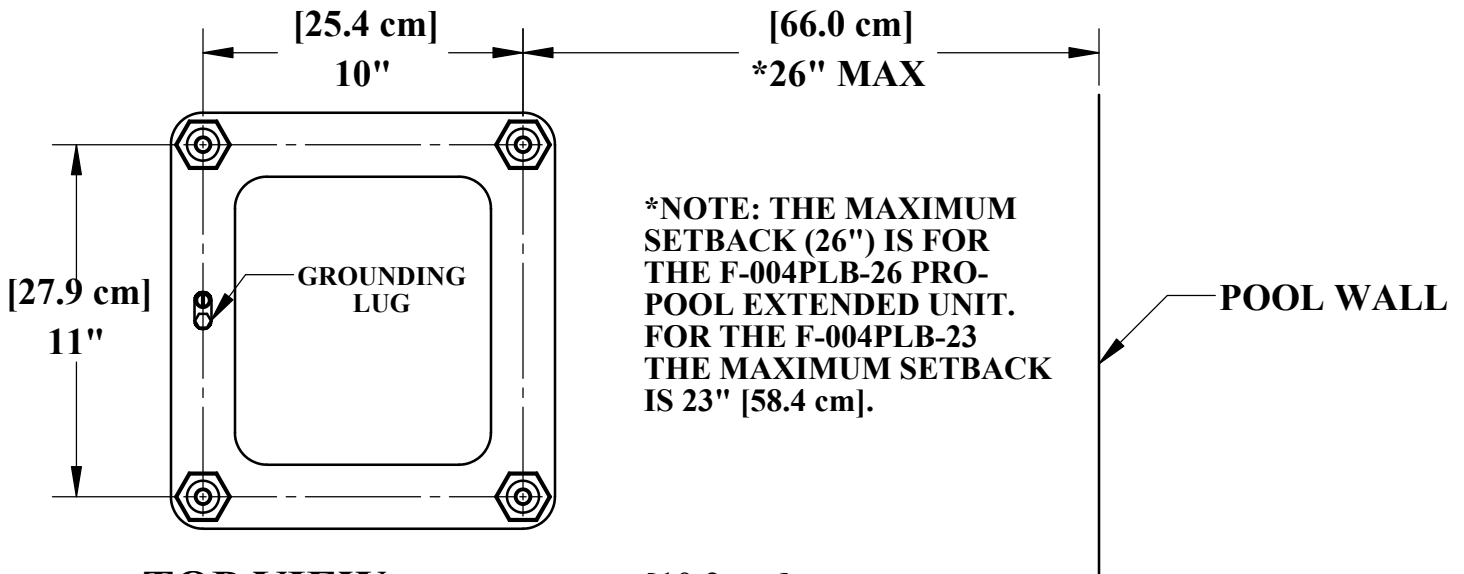
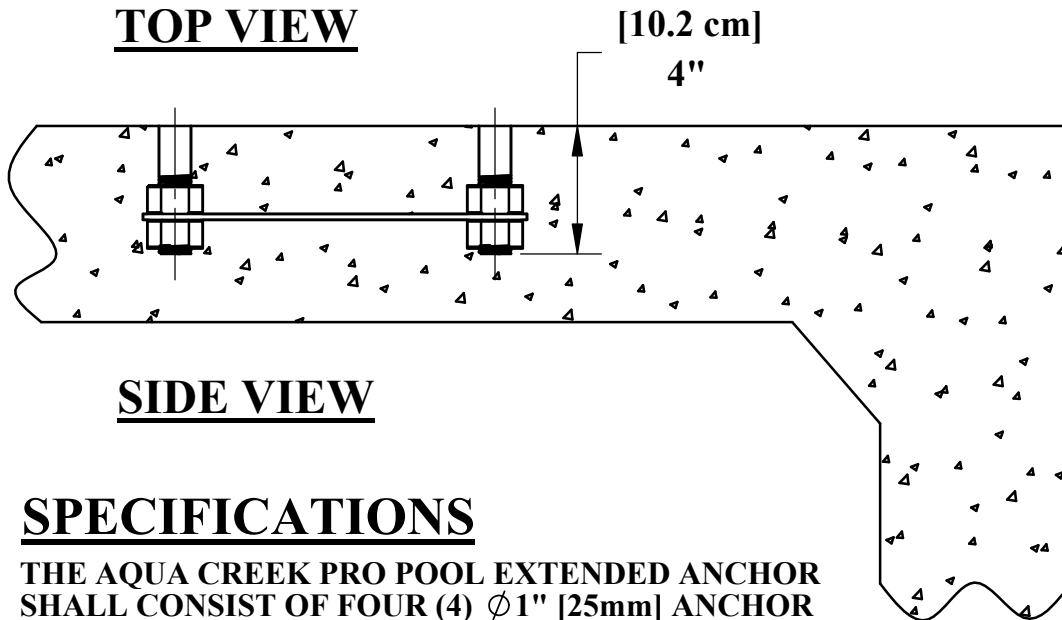


PRO POOL EXTENDED ANCHOR



TOP VIEW



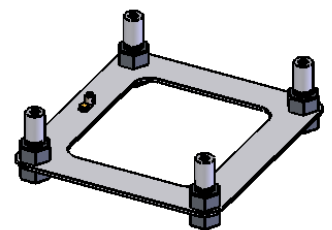
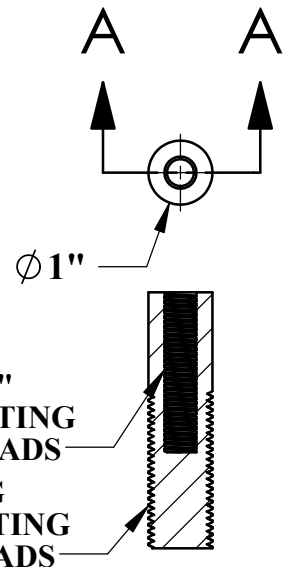
SIDE VIEW

SPECIFICATIONS

THE AQUA CREEK PRO POOL EXTENDED ANCHOR SHALL CONSIST OF FOUR (4) ϕ 1" [25mm] ANCHOR SOCKETS MOUNTED ON A 3/16" [4.8mm] JIG PLATE. THE ANCHOR SOCKETS SHALL BE ADJUSTABLE WITHIN THE JIG PLATE. THE ANCHOR SOCKETS SHALL BE REMOVABLE FOR RETRO-FIT PLACEMENT IN AN EXISTING POOL OR SPA DECK.

THE MANUFACTURER RECOMMENDS THAT THE ANCHOR ASSEMBLY BE GROUNDED PER LOCAL CODES.

- ANCHOR SOCKET: ϕ 1" [25mm] TYPE 304 STAINLESS STEEL
- ADJUSTING NUT: ϕ 1"-8 HEX NUT, TYPE 310 STAINLESS STEEL
- JIG PLATE: 3/16" [5mm] PLATE, PLAIN CARBON STEEL



Accessible Environments, Inc.
Authorized Dealer
(800) 643-5906



NOTE:
*SPECIFICATIONS ARE SUBJECT TO CHANGE WITHOUT NOTICE
*ALL DIMENSIONS ARE IN INCHES

PRODUCT:	F-04CAJP	
DWG #:	F-04CAJP-1	
SCALE:	1:6	DATE: 5/4/09
DRAWN BY:	DS	REVISION: A