

Stainless Steel Flip-up Grab Bar with "Locking Hinge"

Configuration: 96

Flip-up
Locking

Application Use:

Architectural

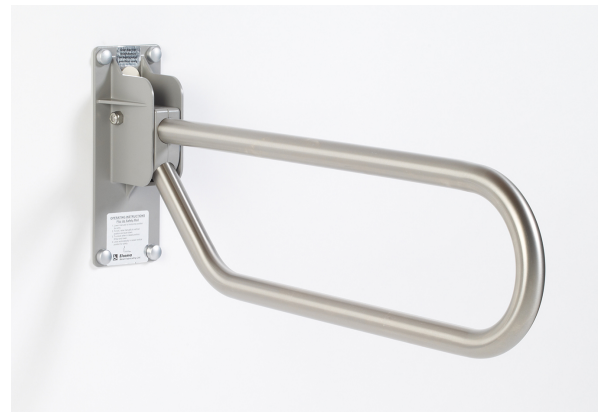
Commercial

Institutional

Residential

Specifications

Manufactured by ELCOMA from 1.25" 18 gauge, type 304 stainless steel, with a heavy duty die cast zinc alloy mounting hinge bracket. The locking hinge flip-up features an automatic locking system that swings freely and locks when in the vertical position safely out of the way. ELCOMA Flip-up grab bars are designed, built, and tested to withstand 250lbs. (113kgs) of vertical load when properly installed.* This exceeds HUD, FHA,VA, ADA, ANSI and other federal, provincial, and local codes. *Grab Bars can only be as strong as what they are mounted to. It is imperative when installing any safety product to consult with a qualified contractor to insure you have sufficient backing.



Custom sizes are available to suit special requirements.

Elcoma manufactures a standard 30" loop with custom lengths available upon request. Flip-up safety rails are designed to be used for vertical load in the down position only, and lock in the up position.

Bar Diameter:	1.25"
Bar Grip:	Smooth, Peened, Knurled, Shur-Grip.
Wall Bracket:	Brushed Metal Finish (Iron Glimmer) & Smooth White
Standard Finishes:	Satin Finish, White or Almond Powder Coating
Custom Finishes:	Multiple colors & finishes available, call your representative or visit www.elcoma.com for selection grid.
Toilet paper options:	Removable
Carrier Options:	In Room Carrier & In Wall Column

